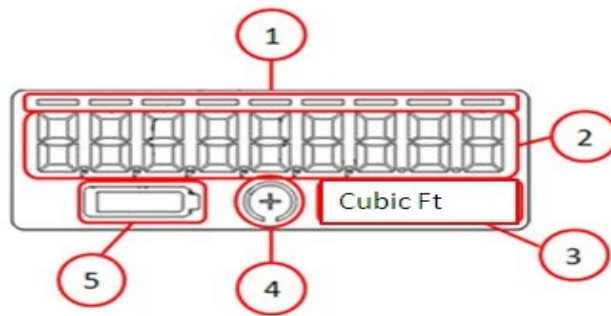


## Getting to know your iPERL meter



Your iPERL meter display contains important information...



1. There are 9 digits / bars on the Sensus iPERL meter at the top of the digital display.
2. The last 2 digits, right of the decimal read in 10's and 100's. The first number to the left of the decimal is 1 gallon. Begin reading right of the decimal.
3. Unit of measure – Avra Water Co-op reads to the 1000 gallons digit.
4. To check for leaks, use the Flow Direction / Empty Pipe Indicator. If there is a plus sign in the middle of this circle, water is passing through the meter.
5. Battery life indicator. This will only show when battery is low.

The face of your meter looks something like a car's odometer, and most water meters either have a dial or a digital display. To get your current usage, read the meter and write down the meter reading, then the next day do the same thing and subtract the numbers to find your daily usage. You can also chart your usage at more regular intervals to help you control your water usage. This is especially helpful in the summertime when watering lawns and flowerbeds can cause a dramatic spike in your water usage.

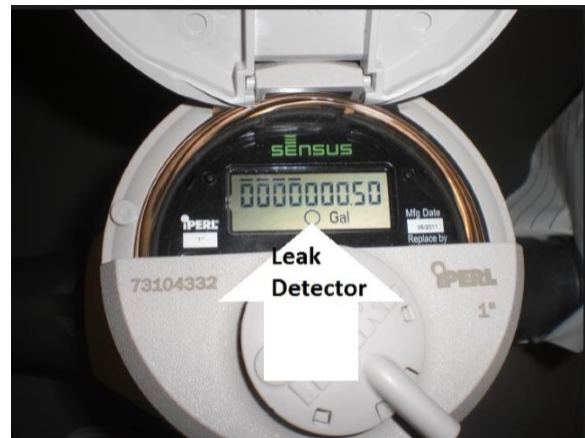
## How to read your iPERL meter...

There are several reasons why you might want to locate and read your water meter. First, you might be interested to know how much water you use in a day. By reading your meter at the beginning and end of a day, you can compare the readings to tell how much water you and your family used. The second reason is to check for leaks.

## How to check for leaks...

Water leaks can be very costly and cause property damage. Additionally, leaks can result in very large water bills. Your Sensus iPERL™ water meter is equipped with a digital LCD register. A plus sign (+) means water is flowing through the meter. If you suspect you have a leak, take the following steps:

1. Write down the meter reading.
2. Turn off all the water fixtures and appliances.
3. Write down the reading again on the meter.
4. Wait approximately 15 minutes.
5. Look at the flow indicator. Does the plus sign (+) disappear or remain?
  - a. If the (+) sign disappears then the flow of water through the meter has stopped.
  - b. If the (+) sign remains then a fixture in your home is still using water or you have a leak in your service line between the meter and your home.



## I think I have a leak – what could it be?

If you think you have a leak, the most likely culprit is a toilet that is running constantly. A faulty flapper on the toilet can cost you \$100 or more a month if it's allowed to run undetected. Other places to look for a leak include the base of your water heater, faucets with faulty washers and even your ice maker (if it fails to shut off as it's supposed to do.) The issue could also be a leaking underground pipe, which are often distinguishable by a patch of green that is noticeably greener than the rest of the lawn. For a leak behind the wall or in a crawl space, look for discolored drywall or ceiling tile.